



當值律師服務結構圖 ORGANISATION CHART OF THE DUTY LAWYER SERVICE

CHAIRMAN & MEMBERS (COUNCIL OF THE DUTY LAWYER SERVICE)

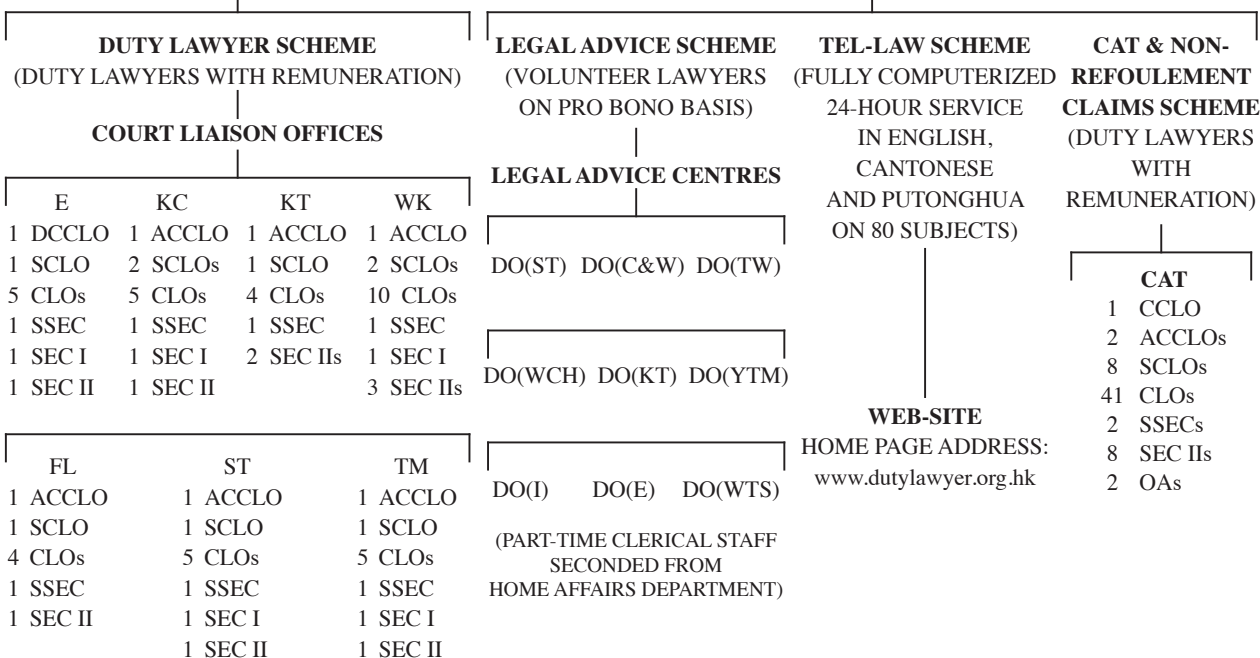
ADMINISTRATOR

(ADMINISTRATION OFFICE)

1 ACCLO (ASSIGNMENT SYSTEM), 1 ACCLO (HR), 2 SCLOs (FLAS), 2 SAcOs, 2 AcOs,
1 PSEC, 3 SSECs, 1 SEC I, 4 SEC IIs, 1 CO II, 2 CAs, 2 OAs

CCLO (OPERATIONS)

CCLO (ADMINISTRATION)



NO. OF FULL TIME STAFF: 165

(1 DCCLO - ON RETIREMENT LEAVE, 5 CLOs + 2 SEC IIs - RESIGNED AND PENDING RECRUITMENT)

COURT LIAISON OFFICES

E - EASTERN
KC - KOWLOON CITY
KT - KWUN TONG
WK - WEST KOWLOON
FL - FANLING
ST - SHATIN
TM - TUEN MUN

DO - DISTRICT OFFICES

ST - SHATIN
C&W - CENTRAL & WESTERN
TW - TSUEN WAN
WCH - WANCHAI
KT - KWUN TONG
YTM - YAU TSIM MONG
I - ISLANDS
E - EASTERN
WTS - WONG TAI SIN

STAFF

ADM - ADMINISTRATOR
CCLO - CHIEF COURT LIAISON OFFICER
DCCLO - DEPUTY CHIEF COURT LIAISON OFFICER
ACCLO - ASSISTANT CHIEF COURT LIAISON OFFICER
SCLO - SENIOR COURT LIAISON OFFICER
SAcO - SENIOR ACCOUNTING OFFICER
CLO - COURT LIAISON OFFICER
AcO - ACCOUNTING OFFICER
PSEC - PERSONAL SECRETARY
SSEC - SENIOR SECRETARY
SEC I - SECRETARY I
SEC II - SECRETARY II
CO II - CLERICAL OFFICER II
CA - CLERICAL ASSISTANT
OA - OFFICE ASSISTANT

CAT & NON-REFOULEMENT CLAIMS SCHEME OFFICE

DATED: 31ST DECEMBER 2018